

# GLOBAL BEARING

we move the world together

[www.chinahuanqiubearing.com](http://www.chinahuanqiubearing.com)  
[andy3344.1688.com](mailto:andy3344.1688.com)



## 余姚市环球轴承有限公司 YUYAO GLOBAL BEARING CO., LTD.

地址：浙江省余姚市低塘街道郑巷开发区

电话：+86-574-62291918

传真：+86-574-62291731

邮编：315492

QQ: 923408118

E-mail: [andy3344@hotmail.com](mailto:andy3344@hotmail.com)

[sales@chinahuanqiubearing.com](mailto:sales@chinahuanqiubearing.com)

Http: [www.chinahuanqiubearing.com](http://www.chinahuanqiubearing.com)

[andy3344.1688.com](http://andy3344.1688.com)

Add: Zhengxiang Development Zone, Yuyao Ningbo, Zhejiang, China

Tel: +86-574-62291918

Fax: +86-574-62291731

P.C: 315492

QQ: 923408118

E-mail: [andy3344@hotmail.com](mailto:andy3344@hotmail.com)

[sales@chinahuanqiubearing.com](mailto:sales@chinahuanqiubearing.com)

Http: [www.chinahuanqiubearing.com](http://www.chinahuanqiubearing.com)

[andy3344.1688.com](http://andy3344.1688.com)



余姚市环球轴承有限公司  
YUYAO GLOBAL BEARING CO., LTD.





**企业愿景**  
**COMPANY VISION**

- 树立专业理念  
Fostering professional ideal
- 打造专业团队  
Building a professional team
- 制造专业产品  
Creating professional products
- 服务专业市场  
Serving for exclusive market


**环球轴承**  
**共创伟业 共享未来**  
 GLOBAL Bearing, Create Greatness and Enjoy Future Together



**环球概况** YUYAO GLOBAL BEARING CO., LTD.  
**GENERAL DESCRIPTION OF THE GLOBAL**

余姚市环球轴承有限公司是专业生产微、小型轴承的企业，拥有国内外最先进的制造和检测设备，产品设计采用ISO9001-2000标准，生产工艺先进，质量管理体系完善。公司专门生产内径4~62mm的低噪音深沟球轴承、“EMQ”电机轴承和非标轴承及外商来图样定作各种尼龙滑轮。企业正处于欣欣向荣的发展中，目前有职工120余人，七条生产流水线，月生产能力120万套以上。公司着眼于产品的优质品味，一切为了用户所求和所想，不参与低价和压价的无序竞争，目标是争创一流的产品，一流的企业。产品畅销国内外，并已出口到韩国、日本、意大利、德国、巴西和香港等地，深受用户赞誉。

余姚市环球轴承有限公司竭诚欢迎海内外客商来公司洽谈业务，携手合作，共图发展。

Yuyao Global Bearing Co., Ltd is specialized in the manufacturing of mini and small size bearings. The company is furnished with the most advanced manufacturing and testing equipment in China. The products are designed according to ISO9001-2000 standard, manufactured through the state-of-art technological processes and controlled by the complete quality management system. The products of the company include low noise deep groove ball bearings with the inner diameters ranged between 4 to 62mm, "EMQ" motor bearings, special bearings and the nylon pulleys produced according to customers' drawings. It is a growing company equipped with a team of more than 120 employees and 7 production lines. The monthly output is 1.2 million sets of products. Instead of participating in the low price competition, the company has won high popularity among Korean, Japanese, Italian, German, Brazilian and Hongkong customers with its first class products and scientific management.

Yuyao Global Bearing CO., Ltd. is looking forward to work with both domestic and overseas customers to usher in a bright future.





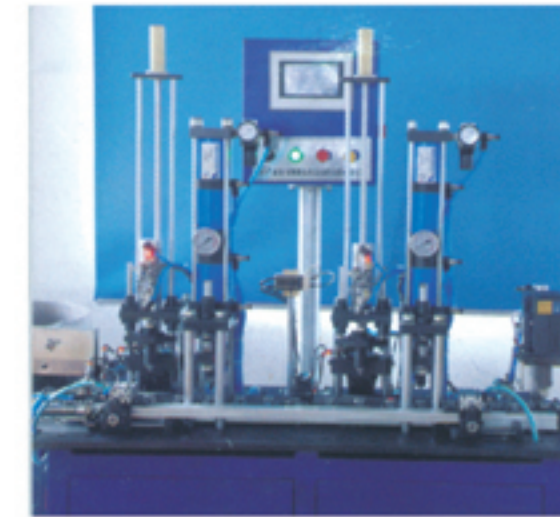
## 环球设备

YUYAO GLOBAL BEARING CO., LTD.

### EQUIPMENT OF THE GLOBAL

公司制定科学严谨的装配流程，确保产品保持同一品质。  
The company has established scientific and strictly-controlled Assembly process to ensure the uniformity of products.

“环球”  
坚持创新研发专注产品品质提升  
"Global" adhere to R&D Focus on products quality improvement





产品应用

YUYAO GLOBAL BEARING CO., LTD.

APPLICATION PRODUCTS



Motorcycle



Agricultural Machinery



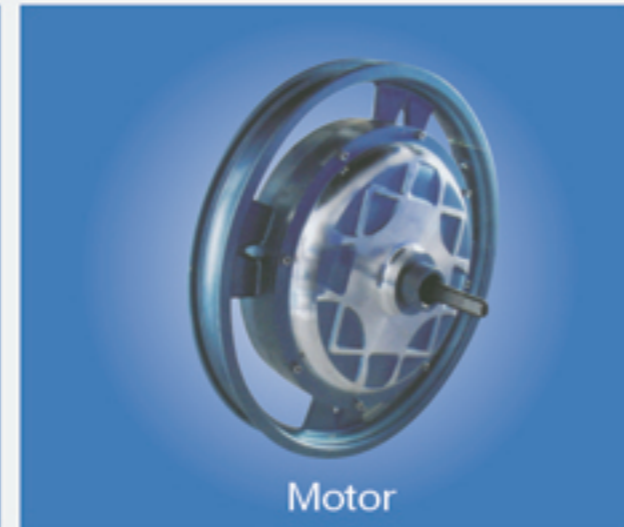
Generator



Auto



Machine tools



Motor



Fan



Washing Machine



Air Conditioner

各国轴承型号比较

Contrast of Bearing Steel No.in Different Country

国家 Country	中国 China	日本 Japan	美国 America	德国 Germany	法国 France
轴承钢型号 Bearing Steel NO.	( GB ) GCr15	( JIS ) SUJ2	( AISI ) 521000	( DIN ) 100Cr6	( NF ) 100C6
不锈钢型号 Stainless Steel NO.	( GB ) 9Cr18	( JIS ) SUS440C	( AISI ) 440C	( DIN ) WNr4535	( NF ) Z100CD17

精度等级 Accuracy Grade

国家 Country	规格 Standard	精度等级 Accuracy Grade		
中国 China	GB	0	6	5
日本 Japan	JIS	P0	P6	P5
美国 America	ANSI	ABEC1	ABEC3	ABEC5
德国 Germany	DIN	P0	P6	P5

径向游隙 (  $\mu\text{m}$  ) Radial Clearance

轴承内径 ( d ) Bore Diameter ( mm )		第二组 ( C2 ) Group		基本组 ( C0 ) Standard		第三组 ( C3 ) Group3		第四组 ( C4 ) Group5		第五组 ( C5 ) Group5	
超过	到	Min	Max	Min	Max	Min	Max	Min	Max	Min	Max
2.5	6	0	7	2	13	8	23	14	29	20	37
6	10	0	7	2	13	8	23	14	29	20	37
10	18	0	9	3	18	11	25	18	33	25	45
18	24	0	10	5	20	13	28	20	36	28	48
24	30	1	11	5	20	13	28	23	41	30	53
30	40	1	11	6	20	15	33	28	46	40	64
40	50	1	11	6	23	18	36	30	51	45	73
50	65	1	15	8	28	23	43	38	61	55	90
65	80	1	15	10	30	25	51	46	71	65	105

科技进取是企业发展之源泉  
品质优良是企业开拓之根本。

Progress in science technology is source for the development of the enterprise;  
Advantage in quality is the base of the development of the enterprise.



## 常用油脂 Grease

### 常用油脂

轴承一般加Great wall (Low noise) 油脂, 带防尘盖 (ZZ) 或密封盖 (2RS) 的轴承一般加Chevron SRI 2#油脂或MobilEM油脂, 除此之外根据不同的要求可加其它型号的油脂或清油。如有特殊要求请于我们的技术部门联系

General Bearings are supplied lubricant with Great wall (Low noise) lubricant. Ball bearings with two shields (ZZ) or two seals (2RS) are supplied grease with Chevron SRI 2# or MobilEM grease as standard and are ready to use. Upon request ball bearings can be lubricated with other grease or oils to any specification. Contact our Engineering Department for specific application.

制造润滑油 Manufacturer GREASE	润滑油 Lubricants	操作温度 Operating temperature		说明 specification
		in° C	In° F	
<b>GREASES 油脂</b>				
SHELL壳牌	ALVANIA RLQ 2#	-25~+120	-30~+248	
	DOILIUM	-40~+150	-40~+302	
EXXON埃克森	POLYREX EM	-40~+180		
EXXON埃克森	BEACON325	-55~+200	-67~+248	
MOBIL 美孚	MOBIL GREASE 28	-60~+175	-76~+347	
	MOBIL HP	-30~+130	-54~+366	MIL-G-3278A
CHEVRON 雪孚龙	CHEVRON SRI2#	-30~+175	-22~+347	MIL-G-81322A
	CHEVRON SRI OEM	-30~+175	-22~+347	
KYODO YUSHI协同	MULTEMP SRL	-40~+150	-40~+302	
	MULTEMP PS ON2	-54~+130	-65~+266	
GREAT WALL 长城	LOW NOISE	-20~+120	-54~+230	
<b>OILS 清油</b>				
SHELL壳牌	WINSORL245X	-57~+177	-71~+350	MIL-G-6085A
ANDERSON安德森	AEROSHELLOL3	-60~+155	-70~+240	KIL-G-7870A
	AEROSHELLOL12	-60~+155	-76~+248	MIL-L-66085A

### 单个轴承振动速度级不超过 (dB)

Single bearing vibration speed grade can not be over the follow values

轴承内径 (mm) Bore diameter	直接系类 (0) Diameter Series			直接系类 (2) Diameter Series				直接系类 (3) Diameter Series			
	Z1	Z2	Z3	Z1	Z2	Z3	Z4	Z1	Z2	Z3	Z4
4	34	32	28	35	32	30	-	36	33	31	-
5	36	34	30	37	34	32	-	37	35	33	-
6	36	34	30	37	34	32	-	37	35	33	-
7	38	35	31	38	36	34	-	-	-	-	-
8	38	35	31	38	36	34	-	-	-	-	-
9	40	36	32	40	37	35	-	-	-	-	-
10	42	38	33	42	39	35	30	44	40	37	32
12	43	39	34	43	39	35	30	45	40	37	32
15	44	40	35	44	41	36	31	46	42	38	33
17	44	40	35	45	41	36	31	47	42	38	33
20	45	41	36	46	42	38	33	48	43	39	34
22	45	41	36	46	42	38	33	48	43	39	34
25	46	42	38	47	43	40	36	49	44	41	37
28	47	43	39	48	44	41	37	50	45	42	38
30	47	43	39	48	44	41	37	50	45	42	38
32	48	44	40	49	45	42	38	51	46	43	39
35	49	45	41	50	46	43	39	52	47	44	40

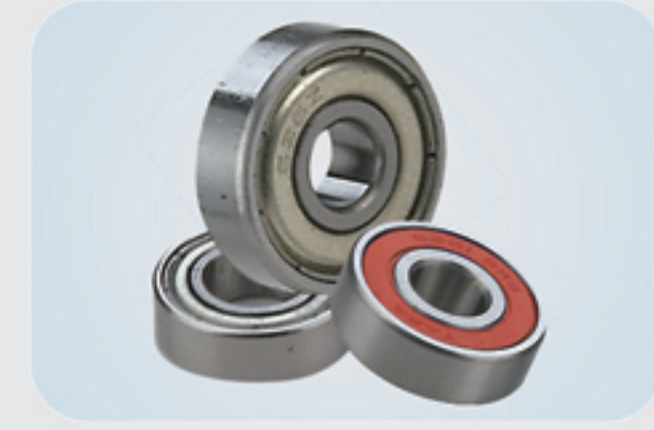
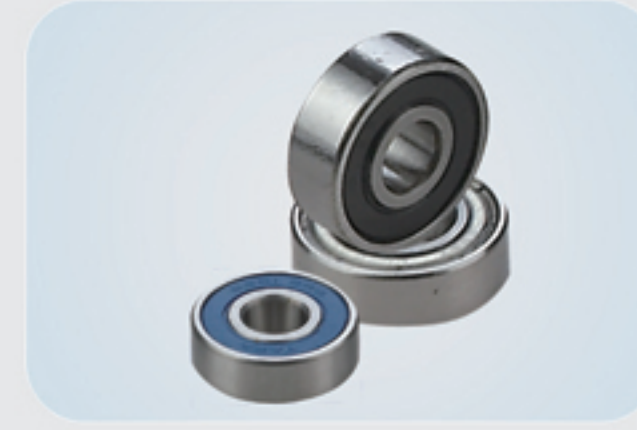
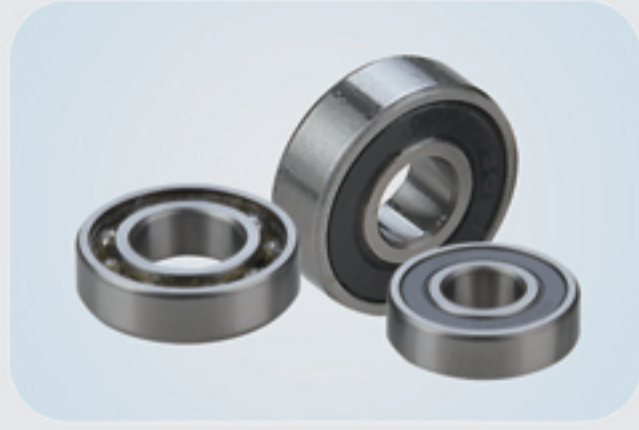
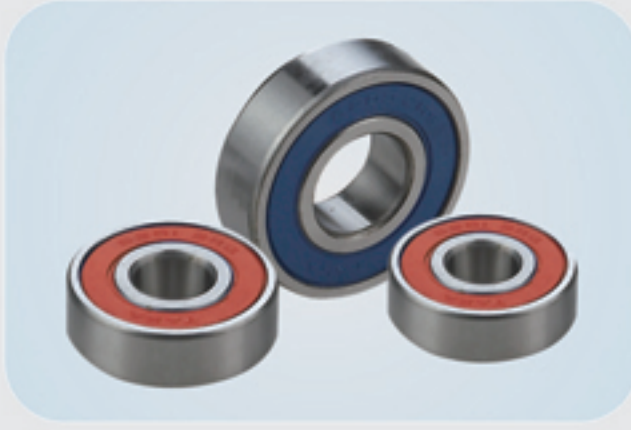
### 单个轴承振动加速度级允许极限值 (μms)

Single bearing vibration speed grade allowed the limit value

轴承内径 (mm) Bore diameter	V			V1			V2			V3			V4		
	低频带 Low frequently	中频带 Medium frequently	高频带 High frequently	低频带 Low frequently	中频带 Medium frequently	高频带 High frequently	低频带 Low frequently	中频带 Medium frequently	高频带 High frequently	低频带 Low frequently	中频带 Medium frequently	高频带 High frequently	低频带 Low frequently	中频带 Medium frequently	高频带 High frequently
4	110	72	60	60	35	32	48	26	22	31	16	15	28	10	10
5	110	72	60	90	60	50	58	36	30	35	21	18	32	11	11
6	110	72	60	90	60	50	58	36	30	35	21	18	32	11	11
7	130	96	80	110	80	65	72	48	40	44	28	24	38	12	12
8	130	96	80	110	80	65	72	48	40	44	28	24	38	12	12
9	130	96	80	110	80	65	72	48	40	44	28	24	38	12	12
10	160	120	100	140	100	85	90	60	50	55	35	30	45	14	15
12	160	120	100	140	100	85	90	60	50	55	35	30	45	14	15
15	210	150	120	180	130	100	110	78	60	65	46	35	52	18	18
17	210	150	120	180	130	100	110	78	60	65	46	35	52	25	25
20	260	190	150	220	160	125	130	100	75	80	60	45	60	25	25
22	260	190	150	180	125	100	130	100	75	80	60	45	60	30	32
25	260	190	150	180	125	100	130	100	75	80	60	45	60	30	32
28	260	190	150	180	150	100	130	100	75	80	60	45	60	35	40
30	300	240	190	200	150	130	150	120	100	90	75	60	70	35	40
32	300	240	190	200	150	130	150	120	100	90	75	60	70	35	40
35	300	240	190	200	150	130	150	120	100	90	75	60	70	42	45



» 产品 Products



60系列深沟球轴承 60 Series

Bearing NO	内径/O.D. d	外径/O.D. D	宽度 (Width) B	倒角 Chamfer r/min	额外负载 (Road Rating) N		钢球参数 BALL COMPLEMEN		极限转速 Grease/Oil		重量 Weight (kg)
					动负荷 Cr Dynamic	静负荷 Cor Static	NO	SIZE (mm)	Grease	Oil	
604	4	12	4	0.2	960	350	7	2.381	36000	45000	0.0025
605	5	14	5	0.2	1070	420	7	2.381	30000	38000	0.0035
606	6	17	6	0.3	1960	730	6	3.969	30000	38000	0.0058
607	7	19	6	0.3	2800	1060	6	3.969	28000	36000	0.0076
608	8	22	7	0.3	3290	1360	7	3.969	26000	34000	0.012
609	9	24	7	0.3	3330	1410	7	3.969	22000	30000	0.015
6000	10	26	8	0.3	4160	1780	7	4.763	21000	28000	0.019
6001	12	28	8	0.3	5110	2380	8	4.763	19000	26000	0.022
6002	15	32	9	0.3	5590	2840	9	4.763	18000	24000	0.030
6003	17	35	10	0.3	6000	3250	10	4.763	17000	22000	0.039
6004	20	42	12	0.6	9390	5020	9	6.35	15000	19000	0.069
6005	25	47	12	0.6	10060	5860	10	6.35	13000	17000	0.080
6006	30	55	13	0.6	11900	7460	11	7.144	10000	14000	0.116

62系列深沟球轴承 62 Series

624	4	13	5	0.2	1150	400	6	2.381	36000	45000	0.0031
625	5	16	5	0.3	1880	680	6	3.175	32000	40000	0.0046
626	6	19	6	0.3	2800	1060	6	3.969	30000	38000	0.0061
627	7	22	7	0.3	3290	1360	7	3.969	28000	36000	0.0077
628	8	24	8	0.3	3330	1410	7	3.969	24000	32000	0.0161
629	9	26	8	0.3	4160	1780	7	4.763	22000	30000	0.0195
6200	10	30	9	0.6	5110	2380	8	4.763	19000	26000	0.0320
6201	12	32	10	0.6	6180	3060	7	5.953	18000	24000	0.0350
6202	15	35	11	0.6	7450	3700	8	5.953	17000	22000	0.0440
6203	17	40	12	0.6	9560	4780	8	6.747	16000	20000	0.060
6204	20	47	14	1	12840	6650	8	7.938	14000	18000	0.0980
6205	25	52	15	1	14020	7930	9	7.938	12000	16000	0.1210
6206	30	62	16	1	15970	10040	9	9.525	9500	13000	0.1920

63系列深沟球轴承 63 Series

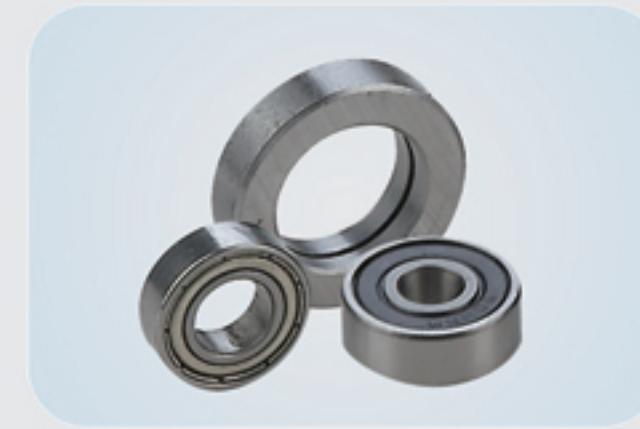
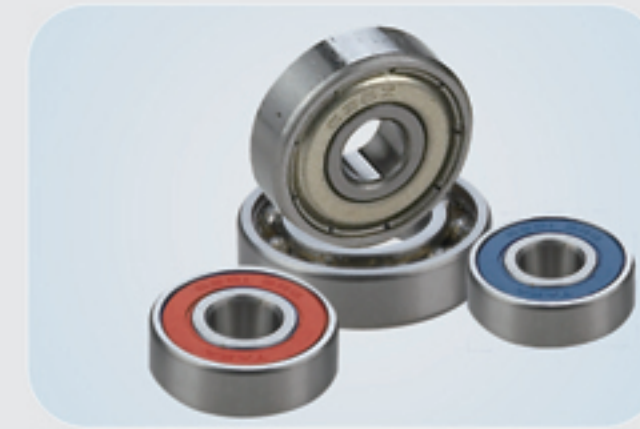
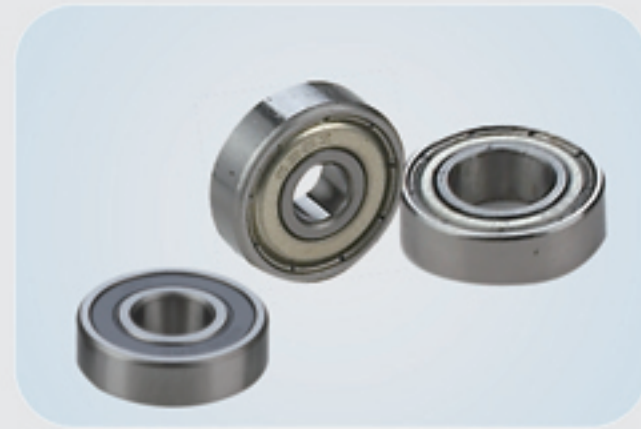
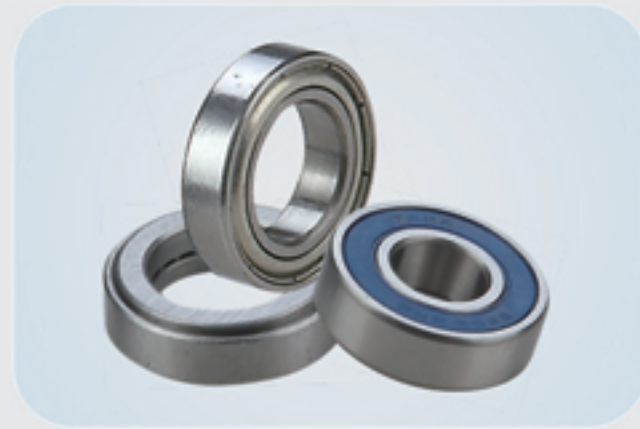
Bearing NO	内径/O.D. d	外径/O.D. D	宽度 (Width) B	倒角 Chamfer r/min	额外负载 (Road Rating) N		钢球参数 BALL COMPLEMEN		极限转速 Grease/Oil		重量 Weight (kg)
					动负荷 Cr Dynamic	静负荷 Cor Static	NO	SIZE (mm)	Grease	Oil	
634	4	16	5	0.3	1880	680	7	3.175	32000	40000	0.0035
635	5	19	6	0.3	2810	1060	6	3.969	30000	36000	0.0083
636	6	22	7	0.3	3290	1360	7	3.969	30000	36000	0.013
637	7	26	9	0.3	3340	1410	7	3.969	28000	34000	0.024
638	8	28	9	0.3	4160	1780	7	4.763	28000	34000	0.029
639	9	30	10	0.6	5120	2390	8	4.763	24000	30000	0.035
6300	10	35	11	0.6	7640	3470	7	6.35	15000	22000	0.053
6301	12	37	12	1.0	7700	4190	6	7.938	17000	22000	0.060
6302	15	42	13	1.0	8800	5400	7	7.938	16000	20000	0.082
6303	17	47	14	1.0	10500	650	7	8.731	15000	19000	0.115
6304	20	52	15	1.1	12200	7780	7	9.525	13000	17000	0.144
6305	25	62	17	1.1	17220	11390	7	11.5	10000	14000	0.232
6306	30	72	19	1.1	23390	16760	8	12.00	9000	12000	0.346

68系列深沟球轴承 68 Series

684	4	11	3	0.20	547	253	9	1.588	35000	45000	0.0012
685	5	11	3	0.20	331	400	9	1.588	33000	40000	0.0018
686	6	13	3.5	0.20	898	458	8	2.00	31000	38000	0.0024
687	7	14	3.5	0.30	1378	711	9	2.00	29000	36000	0.0030
688	8	16	5	0.30	1378	711	9	2.381	28000	32000	0.0035
689	9	19	5	0.30	1400	750	9	2.381	26000	30000	0.0040
6800	10	19	5	0.30	1040	750	11	2.381	26000	26000	0.005
6801	12	21	5	0.30	1400	900	12	2.381	22000	24000	0.006
6802	15	24	5	0.30	1920	1180	14	3.5	20000	22000	0.007
6803	17	26	5	0.30	2180	1280	15	3.5	19000	20000	0.008
6804	20	32	7	0.30	3450	2250	14	3.175	17000	18000	0.018
6805	25	37	7	0.30	3700	2650	16	3.175	15000	16000	0.022
6806	30	42	7	0.30	4700	3650	19	3.175	13000	13000	0.026



>> 产品 Products



69系列深沟球轴承 69 Series

Bearing NO	内径/O.D. d	外径/O.D. D	宽度 (Width) B	倒角 Chamfer r/min	钢球参数 BALL COMPLEMEN		额外负载 (Road Rating) N		重量 Weight (kg)
					NO	SIZE (mm)	动负荷 Cr Dynamic	静负荷 Cor Static	
694	4	11	4	0.15	8	2.00	960	350	0.0018
695	5	13	4	0.2	8	2.00	1070	420	0.0022
696	6	15	5	0.2	8	2.381	1470	600	0.0039
697	7	17	5	0.3	8	2.381	1600	710	0.0053
698	8	19	6	0.3	7	3.5	2230	910	0.0072
699	9	20	6	0.3	9	2.381	2480	1090	0.0075
6900	10	22	6	0.3	9	2.381	2690	1270	0.010
6901	12	24	6	0.3	10	3.5	2890	1460	0.011
6902	15	28	7	0.3	10	3.969	4320	2250	0.017
6903	17	30	7	0.3	11	3.969	4590	2250	0.018
6904	20	37	9	0.3	11	4.769	6370	3680	0.036
6905	25	42	9	0.3	13	4.763	6660	4180	0.041
6906	30	47	9	0.3	14	3.175	7240	5010	0.045

160系列深沟球轴承 160 Series

16001	12	28	7	0.3	8	4.763	5110	2390	0.019
16002	15	32	8	0.3	9	4.763	5590	2840	0.0252
16003	17	35	8	0.3	10	4.763	6000	3250	0.03
16004	20	42	8	0.3	10	5.953	7910	4440	0.048
16005	25	47	8	0.3	12	5.963	6940	4600	0.059
16006	30	55	9	0.3	12	6.35	9950	6530	0.085

R系列深沟球轴承 R Series

R	内径/O.D. d	外径/O.D. D	宽度 (Width) B		倒角 Chamfer r/min	NO	SIZE (mm)	动负荷 Cr Dynamic	静负荷 Cor Static	重量 Weight (kg)
			开式 Open	闭式 Shielded						
R3	4.762	12.7	3.967	4.978	0.3	6	2.381	1310	490	
R4	6.35	15.875	4.978	4.978	0.3	8	2.381	1480	615	
R4A	6.35	19.05	5.556	7.144	0.3	7	3.969	2340	885	
R6	9.525	22.225	5.556	7.144	0.3	7	3.969	3300	1400	
R8	12.7	28.575	6.35	7.938	0.3	8	4.763	3912	2245	
R10	15.875	34.925	7.144	8.731	0.6	10	4.763	4605	2774	
R12	19.05	41.275	7.938	11.112	0.6	9	6.35	7246	4445	
R14	22.225	47.625	9.525	12.7	0.6	10	6.35	7740	4960	
R16	25.4	50.8	9.525	12.7	0.6	10	6.747	7740	5120	
R18	28.575	53.975	9.525	12.7	0.6	9	7.938	10180	6910	

16系列深沟球 16 Series

Bearing NO	内径/O.D. d	外径/O.D. D	宽度 (Width) B		倒角 Chamfer r/min	额外负载 (Road Rating) N	
			开式 Open	闭式 Shielded		动负荷 Cr Dynamic	静负荷 Cor Static
1601	4.762	17.462	6.35	7.938	0.3	1970	730
1602	6.35	17.462	6.35	7.938	0.3	1970	730
1603	7.938	22.225	7.144	8.731	0.3	3290	1360
1604	9.525	22.225	7.144	8.731	0.4	3330	1410
1605	7.938	23.019	7.938	7.938	0.3	3330	1410
1606	9.525	23.019	7.938	7.938	0.4	3330	1410
1607	11.112	23.019	7.938	7.938	0.4	2690	1270
1614	9.925	28.575	9.525	9.525	0.6	5110	2390
1615	11.112	28.575	9.525	9.525	0.6	5110	2390
1616	12.7	28.575	9.525	9.525	0.6	5110	2390
1620	11.112	34.928	11.112	11.112	0.6	7450	3700
1621	12.7	34.925	11.112	11.112	0.6	7450	3700
1622	14.288	34.925	11.112	11.112	0.6	7450	3700
1623	15.875	34.925	11.112	11.112	0.6	7450	3700
1628	15.875	41.275	12.7	12.7	0.6	9390	5020
1630	19.05	41.275	12.7	12.7	0.6	9390	5020
1633	15.875	44.45	12.7	12.7	0.6	9390	5020
1635	19.05	44.45	12.7	12.7	0.6	9390	5020
1638	19.05	50.80	14.288	14.288	0.6	10060	5860

特殊加宽深沟球轴承系列 Special Series

6201-1/2	12.7	32	10	0.6	6180	6180
6201-13	13	32	10	0.6	6180	3060
6202-1/2	12.7	35	11	0.6	7450	3060
6202-13	13	35	11	0.6	7450	3700
6202-14	14	35	11	0.6	7450	3700
6202-10	15.875	35	11	0.6	7450	3700
6206-16	16	35	11	0.6	7450	3700
6203-1/2	12.7	40	12	1	9560	4780
6203-13	13	40	12	1	9560	4780
6203-15	15	40	12	1	9560	4780
6203-10	15.875	40	12	1	9560	4780
6203-16	16	40	12	1	9560	4780
6203-12	19.05	40	12	1	9560	4780
99502H	15.875	34.925	11	0.6	7450	3700



>> 产品 Products



HQ-M608



HQ-PB626-PIN



HQ-M6300



HQ-PB114



HQ-PB119



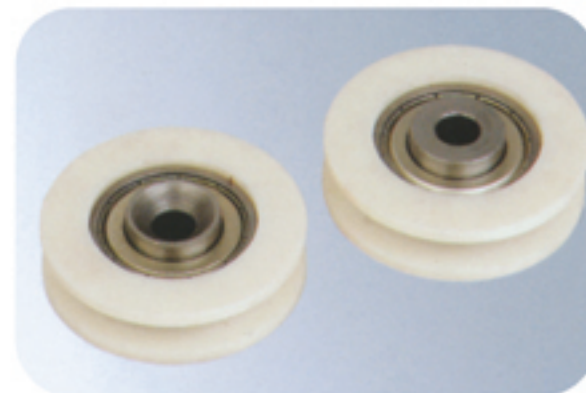
HQ-PB107



HQ-PB626



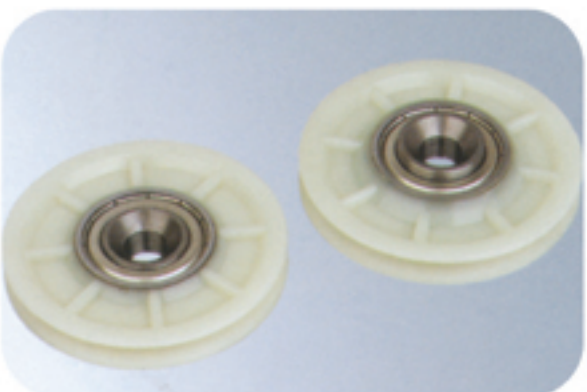
HQ-PB606



HQ-PB6201



HQ-PB102



HQ-PB103



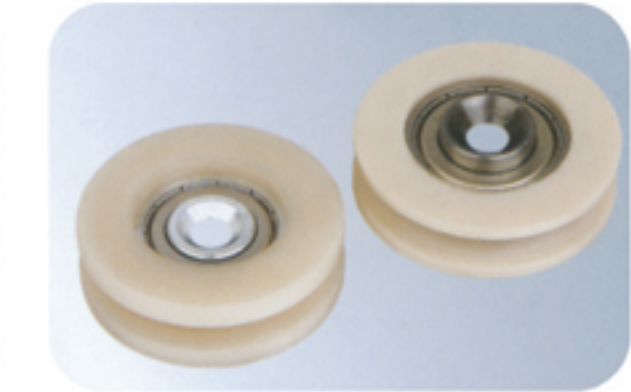
HQ-PB121



HQ-PB608



HQ-M6203-43



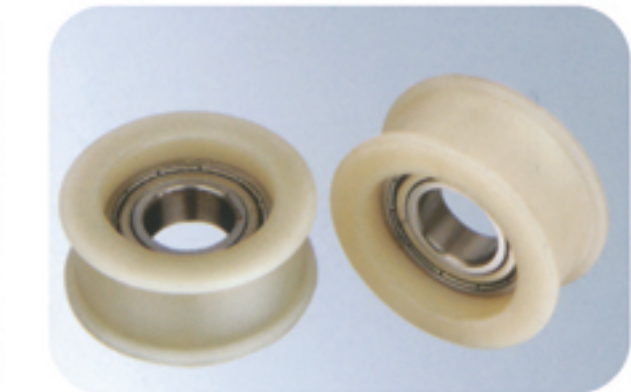
HQ-PB6200G



HQ-PB6202-68



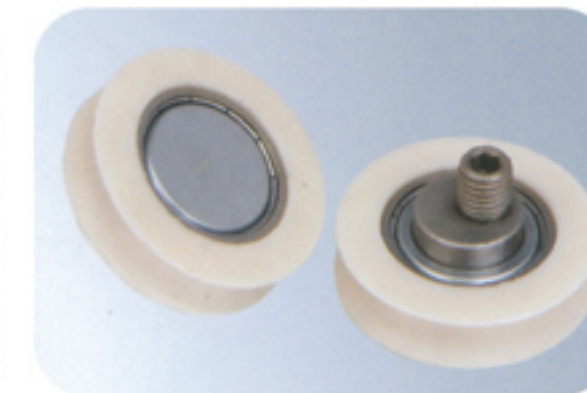
HQ-PB608PIN



HQ-PB6003G



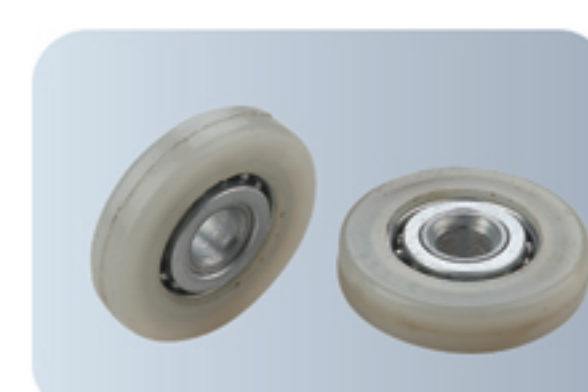
HQ-PB6200W



HQ-PB6002PIN



HQ-PB6200B



HQ-PB6001-N



HQ-PB6201-W



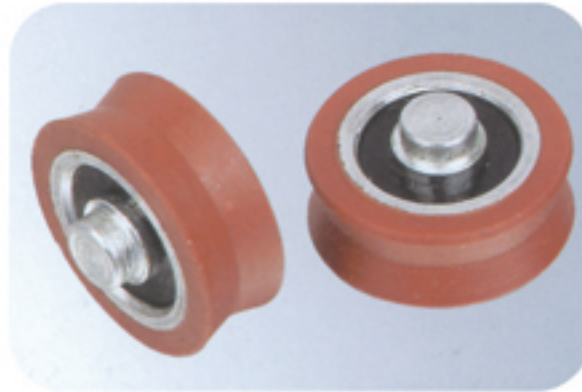
HQ-M6202-13



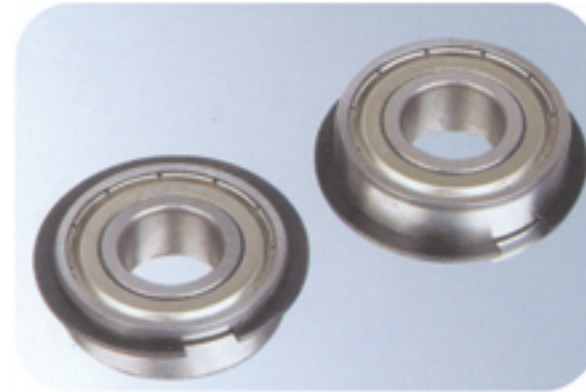
>> 产品 Products



HQ-M6204



HQ-PB111



HQ-6202-ZZNR



Inner Race



HQ-M6002



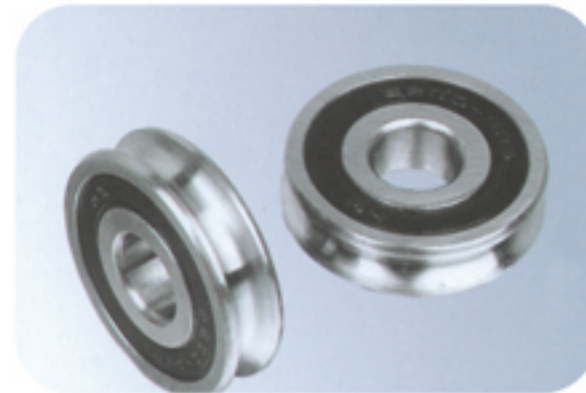
HQ-PB6002



HQ-PB109



HQ-M104



HQ-M6200



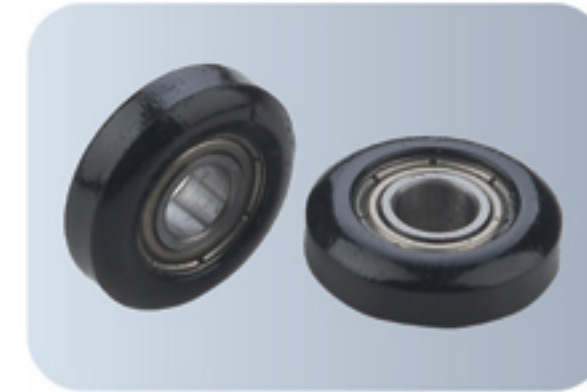
HQ-PB110



HQ-M107



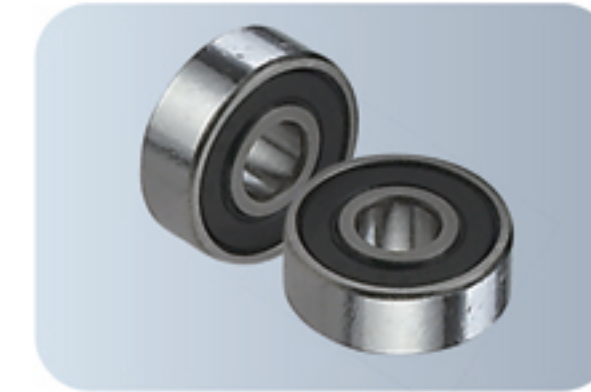
HQ-PB626-B



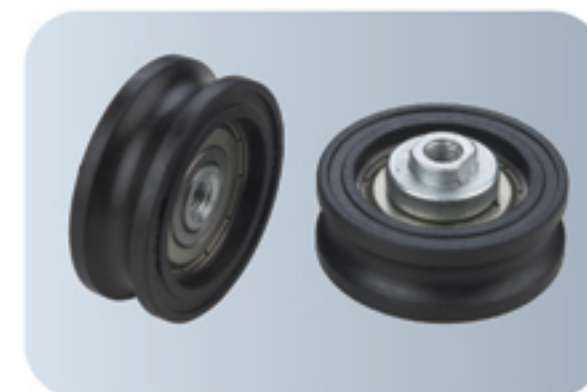
HQ-PB686/B



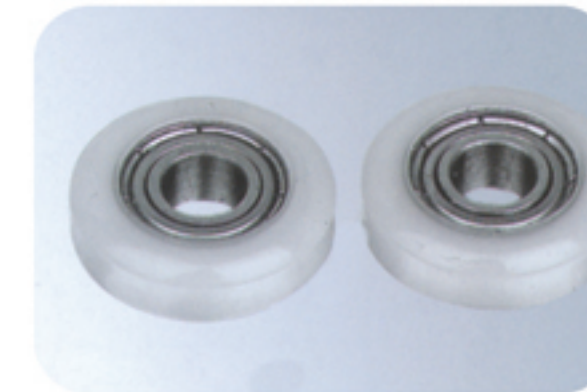
HQ-M6301



16\*31\*10



HQ-PB6201-PIN



HQ-PB686



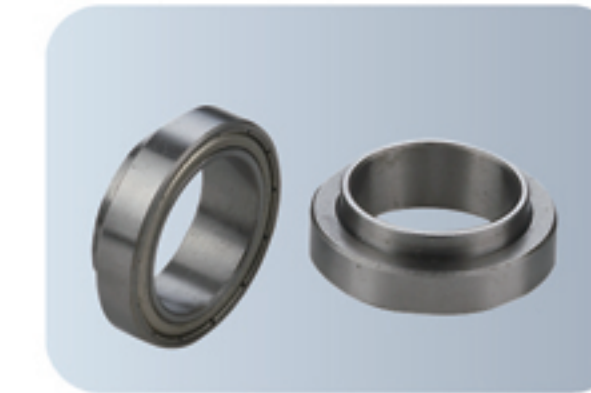
HQ-M103



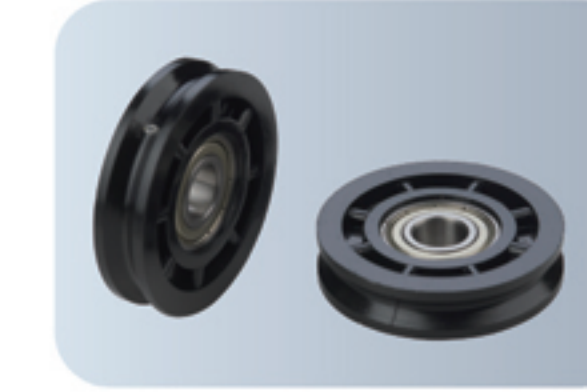
HQ-M6002



HQ-M608-COM



HQ-Z3053971



HQ-PB6202-70



HQ-M6202



HQ-PB113



非标产品参数  
instruction of non-standard bearing

型号 TYPE	内径 INNER DIAMETER (BORE OR SHAFT) -mm	外径 OUTER DIAMETER (mm)	高度 WIDTH	材质 MATERIAL	备注 NOTE
HQ-M608	8.00 (BORE)	26.00	7.00	CHROME STEEL	
HQ-PB626-PIN	6.00 (BORE)	25.40	7.00	CARBON STEEL AND PA66	
HQ-M6300	6.00 (BORE)	79.00	6.00	CHROME STEEL	
HQ-PB114	5.00 (SHAFT)	12.80	4.50	CHROME STEEL AND PA66	
HQ-PB119	6.00 (BORE)	34.00	9.00	CHROME STEEL AND POM	
HQ-PB107	3.50 (BORE)	22.00	6.50	CHROME STEEL AND PA66	LENGTH OF INNER IS 9.00MM
HQ-PB626	6.00 (BORE)	25.00	8.00	CHROME STEEL AND PA66	
HQ-PB606	4.00 (BORE)	19.00	5.50	CHROME STEEL AND PA66	
HQ-PB6201	8.00 (BORE)	50.00	13.50	CHROME STEEL AND PA66	LENGTH OF INNER IS 21.00MM
HQ-PB102	18.00 (BORE)	48.00	14.50	CHROME STEEL AND PA66	LENGTH OF INNER IS 30.00MM
HQ-PB103	10.00 (BORE)	64.00	9.00	CHROME STEEL AND PA66	LENGTH OF INNER IS 10.00MM
HQ-PB121	17.80 (SHAFT)	38.00		CHROME STEEL AND POM	LENGTH OF INNER IS 56.00MM
HQ-PB608	8.00 (BORE)	47.00	7.00	CHROME STEEL AND PA66	LENGTH OF INNER IS 18.00MM
HQ-M6203-43	17.00 (BORE)	43.00	12.00	CHROME STEEL	
HQ-PB6200G	8.00 (BORE)	50.00	16.00	CHROME STEEL AND PA66	LENGTH OF INNER IS 23.00MM
HQ-PB6202-68	15.00 (BORE)	68.00	15.80	CHROME STEEL AND PA66	
HQ-PB608PIN	9AND9.80 (SHAFT)	28.00	27.00SHAFT)	CHROME STEEL AND PA66	
HQ-PB6003G	17.00 (BORE)	50.00	22.00	CHROME STEEL AND PA66	
HQ-PB6200W	10.00 (BORE)	48.00	13.50	CHROME STEEL AND PA66	
HQ-PB6002PIN	20.00 (SHAFT)	48.10	13.50	CHROME STEEL AND PA66	LENGTH OF INNER IS 20.00MM
HQ-PB6200B	10.00 (BORE)	45.00	15.80	CHROME STEEL AND PA66	
HQ-PB6001-N	8 (BORE)	38.00	8.00	CHROME STEEL AND PA66	PA66 AS OUTER RACE
HQ-PB6201-W	12.00 (SHAFT)	40.00	15.00	CHROME STEEL AND PA66	USED IN LIFT
HQ-M6202-13	13.00 (BORE)	35.00	11.00	CHROME STEEL	

型号 TYPE	内径 INNER DIAMETER (BORE OR SHAFT) -mm	外径 OUTER DIAMETER (mm)	高度 WIDTH	材质 MATERIAL	备注 NOTE
HQ-M6204	13.50 (BORE)	47.00	14.00	CHROME STEEL	LENGTH OF INNER IS 18.00mm
HQ-PB111	7.40 (SHAFT)	21.00	8.00	CARBON STEEL AND PA66	LENGTH OF INNER IS13.50mm
HQ-6202-ZZNR	15.00 (BORE)	35.00	11.00	CHROME STEEL	NR
INNER RACE	28.00 (BORE)	35.00	20.00	CHROME STEEL	
HQ-M6002	15.00 (BORE)	32.00	H1=9 H2=18	CHROME STEEL AND PA66	USED IN OUT DOOR MACHINERY
HQ-PB6002	10.00 (BORE)	44.00	11.00	CHROME STEEL AND PA66	LENGTH OF INNER IS13.50mm
HQ-PB109	7.40 (SHAFT)	22.00	7.00	CARBON STEEL AND PA66	LENGTH OF INNER IS14.00mm
HQ-M104	9.0 (BORE)	27.50	8.50	CHROME STEEL	LENGTH OF INNER IS10.00mm
HQ-M6200	10.00 (BORE)	30.00	8.00	CHROME STEEL	
HQ-PB110	8.00 (SHAFT)	24.00	8.00	PA66 AND POM	
HQ-M107	5.20 (BORE)	25.00	6.00	CARBON STEEL	USED IN GYM TOOLS
HQ-PB626B	6.00 (BORE)	30.10	13.00	CHROME STEEL AND PA66	
HQ-PB686-B	6.00 (BORE)	19.00	6.00	CHROME STEEL	
HQ-M6301	13.00 (BORE)	37.00	12.00	CHROME STEEL	LENGTH OF INNER IS31.50mm
16*31*10	16.00 (BORE)	31.00	10.00	CHROME STEEL	USED IN BICYCLE
HQ-PB6201-PIN	12.00 (BORE)	44.00	16.00	CHROME STEEL AND PA66	
HQ-PB686	6.00 (BORE)	19.00	6.10	CHROME STEEL AND PA66	
HQ-M103	8.00 (BORE)	20.00	6.00	CHROME STEEL	
HQ-M6002	15.00 (BORE)	32.00	9.00	CHROME STEEL	LENGTH OF INNER IS15.00mm
HQ-M608-COM	8.00 (BORE)	30.00	16	CHROME STEEL	608ZZ INSIDE
HQ-Z3053971	25.35 (BORE)	37.50	H1=7.5 H2=11.5	CHROME STEEL	
HQ-PB6202-70	15.00 (BORE)	70.00	15.00	CHROME STEEL AND PA66	THREE BEARING INSIDE
HQ-M6202	15.00 (BORE)	35.00	H1=11 H2=26.5	CHROME STEEL	LENGTH OF INNER IS26.50mm
HQ-PB113	8.00 (SHAFT)	30.00	12.00	CARBON STEEL AND PA66	LENGTH OF INNER IS21.00mm



**NEW PRODUCT-SOCKET**

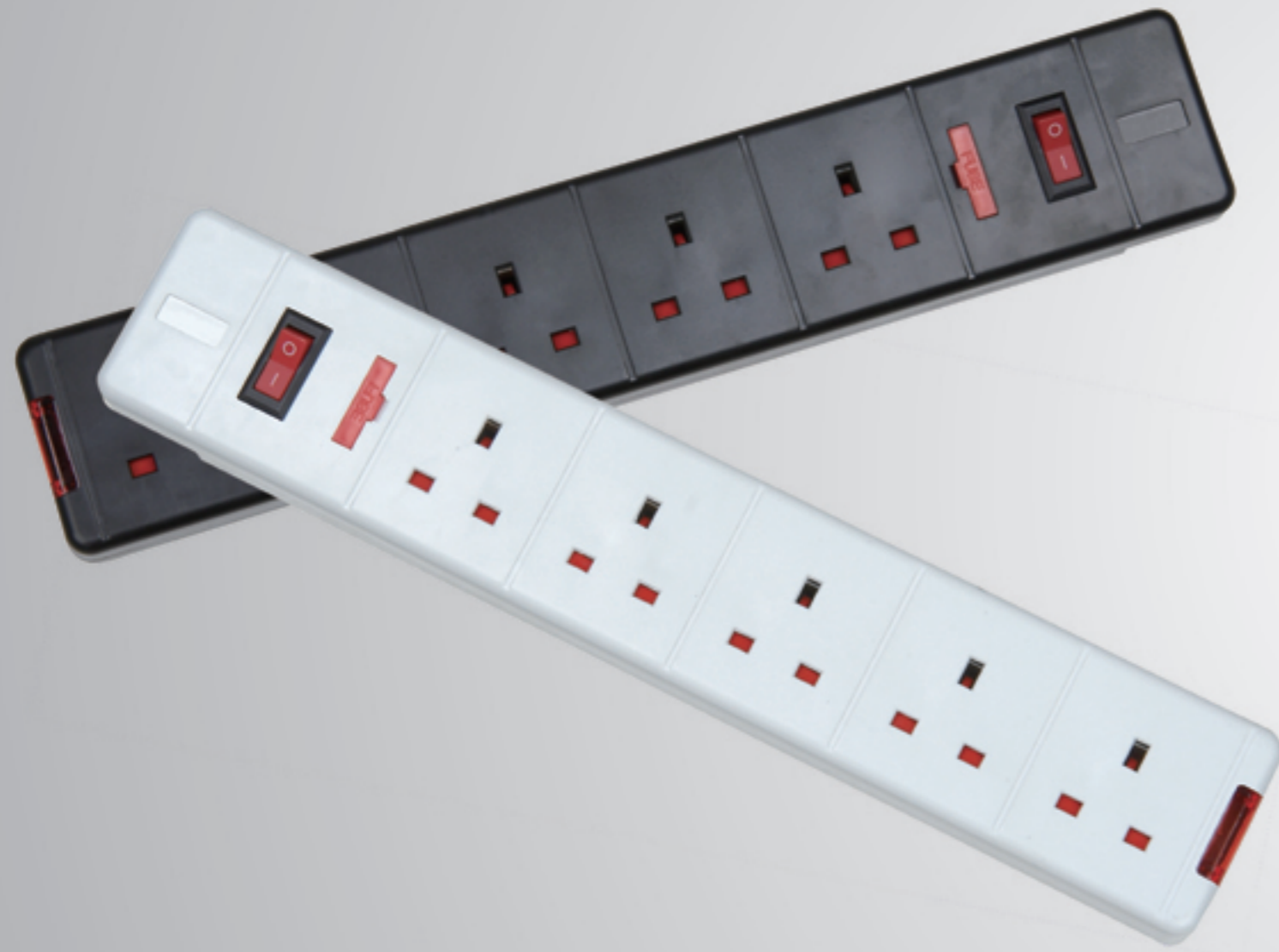


**NEW PRODUCT-SOCKET**





**NEW PRODUCT-SOCKET**



**NEW PRODUCT-SOCKET**

